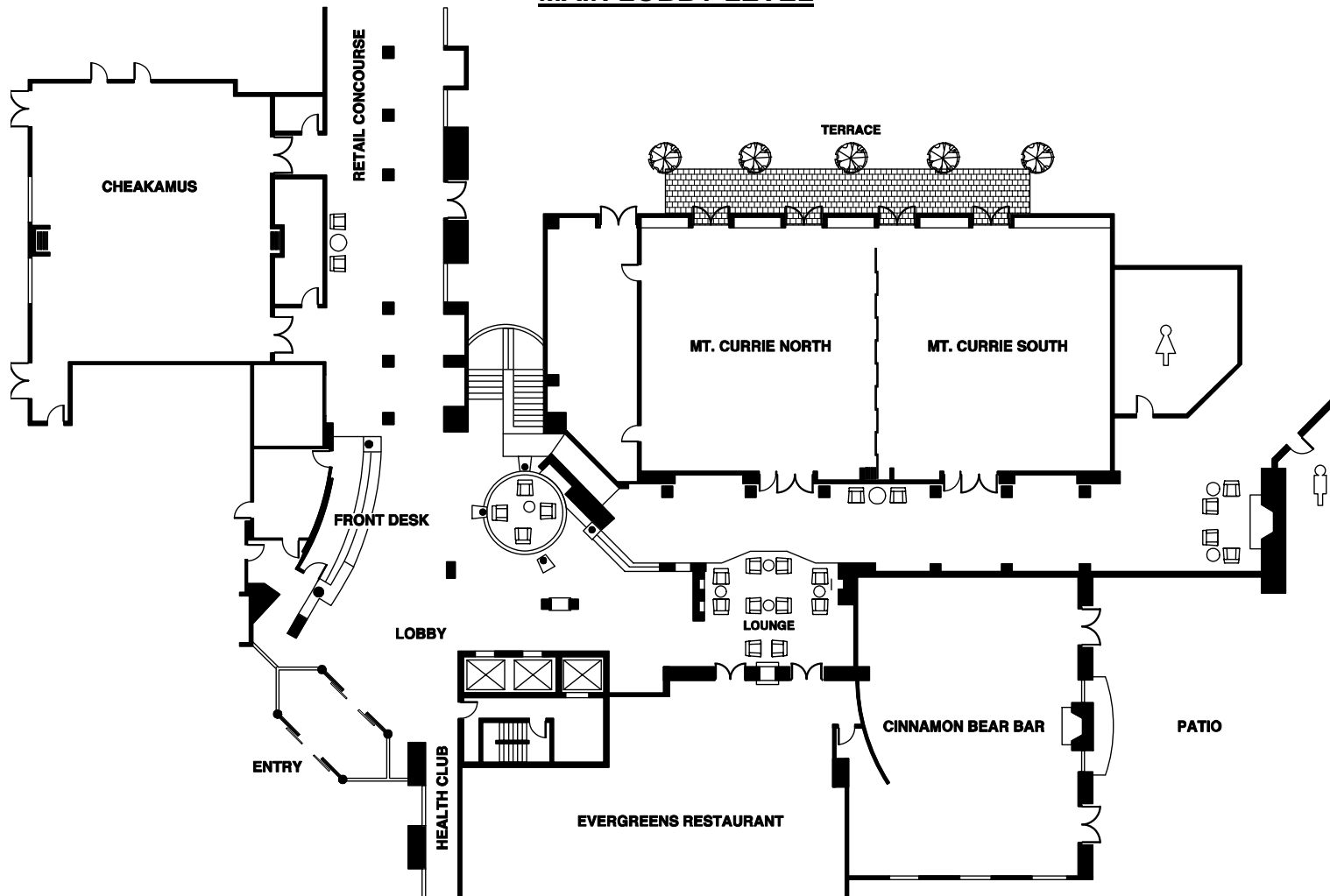


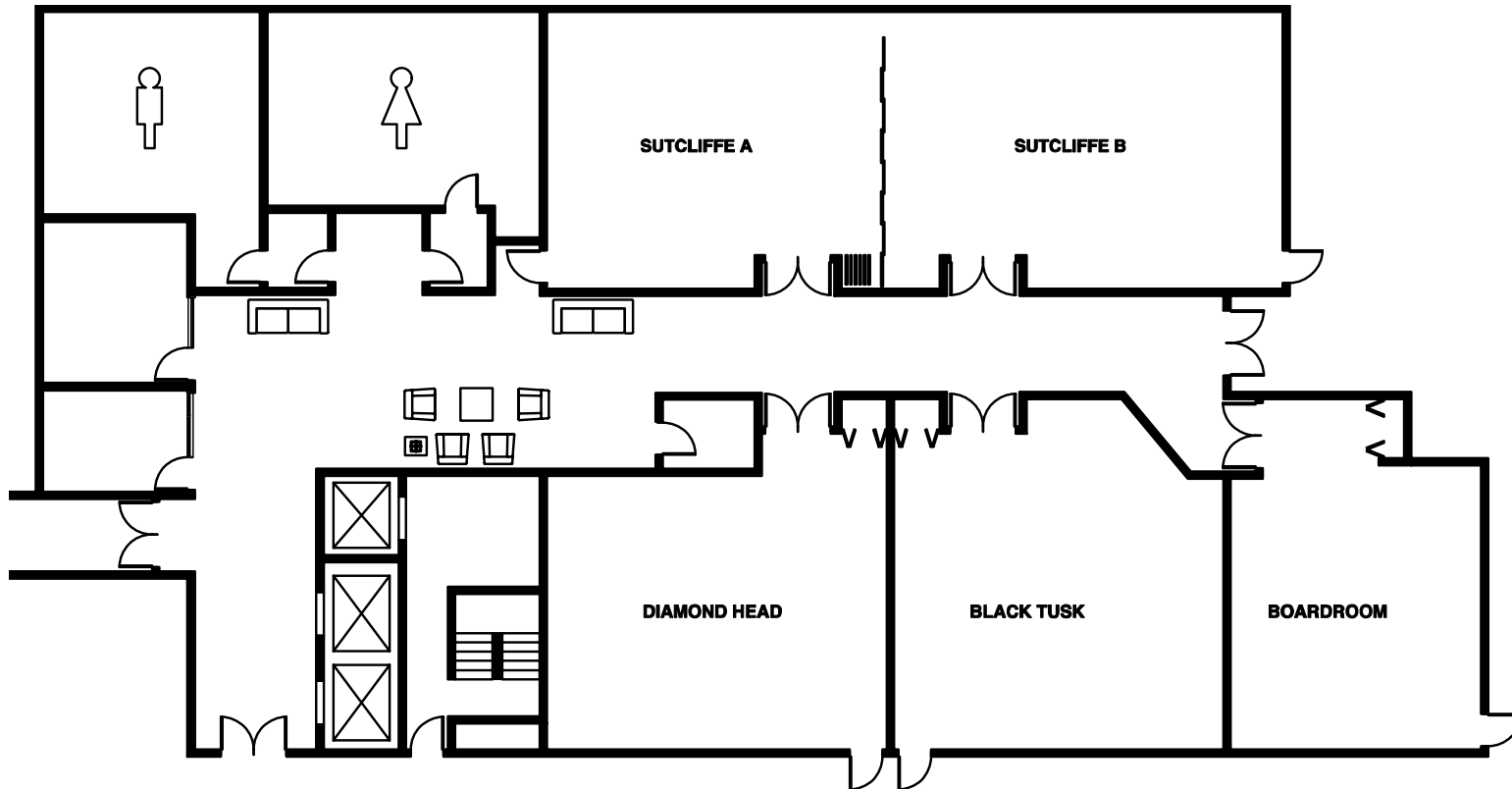


Hilton
Whistler Resort
MAIN LOBBY LEVEL



ROOM	SQ. FOOTAGE	SIZE (FT.)	CEILING HT.(FT.)
Mt. Currie Ballroom	4000	94x43	12'
Mt. Currie North	2000	47x43	12'
Mt. Currie South	2000	47x43	12'
Cheakamus	2100	41x52	9'


Hilton
 Whistler Resort
LOWER LEVEL



ROOM	SQ. FOOTAGE	SIZE (FT.)	CEILING HT.(FT.)
Sutcliffe	1716	26x66	10'
Sutcliffe A	780	26x30	10'
Sutcliffe B	936	26x36	10'
Diamond Head	858	33x26	10'
Black Tusk	900	30x30	10'
Boardroom	598	23x26	10'
Executive Boardroom	160	8x20	10'